

# Cam, Cabinet & Switch Locks

FEATURES	Medeco <sup>3</sup>	CLIQ	Medeco XT
Easily integrated into existing cam lock master key systems	●	●	●
Easy installation	●	●	●
Completely serviceable and may be rekeyed in the event of a lost or stolen key	●	●	●
UL437 Listing on cylinder for high security	●		
Cam locks available in all standard lengths, flats, and rotations	●	●	●
Switch locks available in single or double switch models and momentary and maintained positions with silver or gold contacts (for low amperage applications) designed to accept quick connect leads	●	●	●

## Medeco<sup>3</sup> Premium High Security

For effective mechanical protection against most forms of attack as well as protection against unauthorized duplicate keys, Medeco<sup>3</sup> cylinders are recommended. Security features including hardened steel components, pins that must be elevated, rotated, and interact with both a sidebar and a slider, and additional pick resistant features make Medeco<sup>3</sup> the cylinder of choice to protect people, property and information.

## Loss & Liability Control

Many of the cylinders in this section are also available with an eCylinder Loss & Liability Control Solution. See the eCylinder Section for more details.

# Cam Locks

## Cam Locks Installation Instructions & Op Codes

### Medeco Cam Lock Part Number Configurations

Model Number	Operation Code	Cylinder	Finish	Keyway	"Cam Lock Operation Code" – Describes the function of the lock. Direction of key turn, rotation, key retaining or two key-pull.
XXXXXXXX	XXX	X	26	XX	

### Cam Lock Operation Codes – Fixed Core Cam Locks

*Describes the function of the lock*

Operation Code	Rotation Distance	Direction to Unlock	Key Retaining or 2 Key Pull
219	90°	Clockwise	Key Retaining
229	90°	Clockwise	2 Key Pull
239	90°	Counter-clockwise	Key Retaining
249	90°	Counter-clockwise	2 Key Pull
259	180°	Clockwise	Key Retaining
269	180°	Clockwise	2 Key Pull
279	180°	Counter-clockwise	Key Retaining
289	180°	Counter-clockwise	2 Key Pull

**Note:** Key Retaining – Key is removable in the locked position only.

2 Key Pull – Key is removable in both the locked and unlocked positions.

### Cam Lock Operation Codes – Removable Core Cam Locks

*Describes the function of the lock*

Operation Code	Rotation Distance	Direction to Unlock	Key Retaining or 2 Key Pull
219	90°	Clockwise	Key Retaining
239	90°	Counter-clockwise	Key Retaining
259	180°	Clockwise	Key Retaining
279	180°	Counter-clockwise	Key Retaining

**Note:** Removable core cam locks are available in key retaining only.

# Cam Locks

Medeco® high security cam locks are recognized throughout the world as the standard for protection in a 3/4 inch diameter lock. Medeco® Cam Locks utilize hardened, stainless steel inserts throughout the cylinder to provide the ultimate defense against drilling, pulling, and other forms of vandal attacks. Patented key control programs prevent the unauthorized duplication of keys and maintain system integrity. Keyed alike, keyed different, or master keyed, Medeco® offers a complete line of cam locks in a wide variety of sizes and functions to meet your specific needs.



### Patented Key Control

Protects against unauthorized duplication of your keys.



### Available in eCylinder

Medeco cam locks are also available with Medeco eCylinders for Loss & Liability control.



### Can Be Masterkeyed

Medeco cam locks can be keyed alike, keyed different or masterkeyed.



### Protection From Physical Attack

Medeco3 cam locks are UL 437 listed and stand up to drilling, picking and other forms of physical attack.

## Benefits:

- All Medeco® cylinders are constructed of durable machined brass components.
- Hardened stainless steel inserts inside the cylinder provide the ultimate defense against drilling and other forms of physical attack.
- Unique elevating and rotating tumbler pin system is virtually pick proof.
- Patented Medeco<sup>3</sup> keys may only be duplicated by Medeco® or an authorized Medeco® service outlet, and only at your request.
- Locks can be keyed alike, keyed different, or master keyed depending on your specific needs.
- Available in various lengths and rotations.

## Technical Information:

- Four or five pin models available depending on size
- Available in three standard sizes, 1 1/16 inch, 7/8 inch and 1 1/8 inch
- Two flat models available, key retaining only
- Clockwise or counterclockwise rotation, 90 or 180 degrees
- Keyed alike, keyed different or master keyed

## Warranty:

Warranted for two (2) years against manufacturer's defects. See the Medeco® limited warranty for full details

## Finishes:

- 26 satin chrome finish standard
- Other finishes available, depending on volume

## Certification:

- UL437 Listed

## Applications:

Medeco® Cam Locks can be used in any standard 3/4 inch diameter application and a multitude of markets including:

- Safe
- Communication
- Alarm
- Access control
- Banking
- Utility
- Data Encryption
- Cabinet
- Transit
- Lockers

## Available Key Technologies:

### Mechanical:

- Medeco<sup>3</sup>

### eCylinder:

- Classic CLIQ
- Medeco XT

**Medeco<sup>3</sup> All-In-One Cam Lock Kits**

Description	Part Number	Medeco <sup>3</sup>	BiLevel	Medeco X4	eCylinder
7/8" Length 5 Pin Cam Lock Kit	600350T KIT (P)				
	600350T KIT (S)				
11/8" Length 5 Pin Cam Lock Kit	600650T KIT (P)				
	600650T KIT (S)				
5/8" Length 5 Pin Cam Lock Kit	601150T KIT (P)				
	601150T KIT (S)				
11/2" 5 Pin Cam Lock Kit	601450T KIT (P)				
	601450T KIT (S)				

**Medeco X4 Cam Lock Kit**

Description	Part Number	Medeco <sup>3</sup>	BiLevel	Medeco X4	eCylinder
1 1/8" length Medeco X4 7 pin cam lock kit with two cams, hex nut, lock washer, mounting washer and 1/4" spacer collar.	210503 (P)				
	210503 (S)				

There is a 6 piece minimum order quantity for high security cam locks.

All cam lock kits include: CP-040500 pronged washer, CT-A05 flat cam, CT-D05 flat cam, CT-J01 offset cam, CT-H07 offset cam, CP-040451 90 degree stop washer, CP-050060 3/4" - 27 mounting nut and 2 keys.

Master keying is not available in a cam lock kit, but may be custom ordered with specific cam locks listed on the following pages.

For pricing of expired patent technologies (Original, Biaxial, KeyMark) please refer to the spreadsheet on the partner section of [www.medeco.com](http://www.medeco.com).

\*\*Refer to the eCylinder section for more detail on specific technologies available and pricing. Technologies are represented by the following letters:

T = Medeco<sup>3</sup>, S = M<sup>3</sup> CLIQ, J = Medeco<sup>3</sup> BiLevel, W = Biaxial, V = Medeco Biaxial CLIQ, K = Medeco KM, N = Medeco X4, C = Classic CLIQ, M = Medeco X4 CLIQ, "." = Original, Z = Medeco Original KW CLIQ, G = Medeco XT \*\*\*See key section for surcharges for custom coined cut keys or special stamping requirements.

**Note:** (P) refers to **Pinned** and (S) to **Sub-Pinned** at the end of each part string in the price book.

## High Security Cam Locks

Description	Part Number	Medeco <sup>3</sup>	BiLevel	Medeco X4	eCylinder
5 pin, 1 1/16" Camlock	600250T (P)				
	600250T (S)				
5 pin, 7/8" Camlock	600350T (P)				
	600350T (S)				
5 pin, 1" Camlock	600450T (P)				
	600450T (S)				
4 pin, 7/8" Camlock	600550T (P)				
	600550T (S)				
5 pin, 1 1/8" Camlock	600650T (P)				
	600650T (S)				
4 pin, 1 1/16" Camlock	600750T (P)				
	600750T (S)				
4 pin, 5/8" Camlock	600850T (P)				
	600850T (S)				
5 pin, 3/4" Camlock	600950T (P)				
	600950T (S)				
5 pin, 5/8" Camlock	601150T (P)				
	601150T (S)				
3 pin, 7/16" Camlock	601250T (P)				
	601250T (S)				
3 pin, 5/8" Camlock	601251T (P)				
	601251T (S)				
5 pin, 1 1/2" Camlock	601450T (P)				
	601450T (S)				
5 pin, 2" Camlock	601452T (P)				
	601452T (S)				

You must specify the operation code to complete the part number. Pinned pricing includes two keys. Standard sizes described, contact Medeco customer service or [medeco.com](http://medeco.com) for variations not listed.

There is a 6 piece minimum order quantity for high security cam locks.

## Cam Lock Operation Codes

Description	Part Number
2 flat, 1 Keypull, Clockwise 90 degree	219
2 Flat, 2 Keypull, Clockwise 90 degree	229
2 Flat, 1 Keypull, Counterclockwise 90 degree	239
2 Flat, 2 Keypull, Counterclockwise 90 degree	249
2 Flat, 1 Keypull, Clockwise 180 degree	259
2 Flat, 2 Keypull, Clockwise 180 degree	269
2 Flat, 1 Keypull, Counterclockwise 180 degree	279
2 Flat, 2 Keypull, Counterclockwise 180 degree	289

For pricing of expired patent technologies (Original, Biaxial, KeyMark) please refer to the spreadsheet on the partner section of [www.medeco.com](http://www.medeco.com).

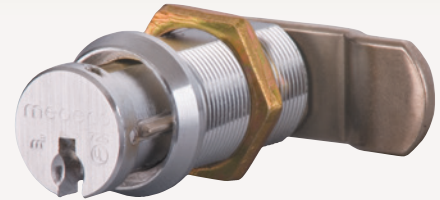
\*\*Refer to the eCylinder section for more detail on specific technologies available and pricing. Technologies are represented by the following letters:

T = Medeco<sup>3</sup>, S = M<sup>3</sup> CLIQ, J = Medeco<sup>3</sup> BiLevel, W = Biaxial, V = Medeco Biaxial CLIQ, K = Medeco KM, N = Medeco X4, C = Classic CLIQ, M = Medeco X4 CLIQ, ". " = Original, Z = Medeco Original KW CLIQ, G = Medeco XT \*\*\*See key section for surcharges for custom coined cut keys or special stamping requirements.

**Note:** (P) refers to **Pinned** and (S) to **Sub-Pinned** at the end of each part string in the price book.

# Removable Core Cam Locks

Medeco® Cam Locks are available with a removable core feature allowing cores to be changed out in seconds, to provide an entirely new keying combination. For applications that may require instantaneous re-keying due to lost or stolen keys, or where periodic re-keying is done as a matter of good business practice, Medeco® Removable Core Cam Locks save valuable time and money. Removable Core Cam Locks offer the same high security features of a Medeco® Cam Lock with the convenience of a removable core.



### Patented Key Control (Light Bulb)

Protects against unauthorized duplication of your keys.



### Quickly Change Cores (Stopwatch)

Medeco removable provide quick and easy cylinder changes in the event keys are lost or stolen.



### Protection From Physical Attack (Drill)

Medeco<sup>3</sup> cam locks are UL 437 listed and stand up to drilling, picking and other forms of physical attack.

## Benefits:

- Removable cores can be changed out in seconds to provide a new, secure keying combination.
- All Medeco® cylinders are constructed of durable machined brass components.
- Hardened stainless steel inserts inside the cylinder provide the ultimate defense against drilling and other forms of physical attack.
- Unique elevating and rotating tumbler pin system is virtually pick proof.
- Patented Medeco<sup>3</sup> keys may only be duplicated by Medeco® or an authorized Medeco® service outlet, and only at your request.
- Locks can be keyed alike, keyed different, or master keyed depending on your specific needs.
- Available in various lengths and rotations.

## Technical Information:

- Four or five pin models available depending on size
- Available in three standard sizes, 11/16 inch, 7/8 inch and 1 1/8 inch
- Two flat models available, key retaining only
- Clockwise or counterclockwise rotation, 90 or 180 degrees
- Keyed alike, keyed different or master keyed

## Warranty:

Warranted for two (2) years against manufacturer's defects. See the Medeco® limited warranty for full details

## Finishes:

- 26 satin chrome finish standard
- Other finishes available, depending on volume

## Applications:

- Medeco® Removable Core Cam Locks can be used in any standard 3/4 inch diameter application and a multitude of markets including:
  - Safe
  - Utility
  - Communication
  - Data Encryption
  - Alarm
  - Cabinet
  - Access control
  - Transit
  - Banking
  - Lockers

## Available Key Technologies:

### Mechanical:

– Medeco<sup>3</sup>

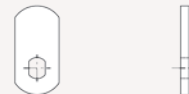
## High Security Removable Core Cam Locks

Description	Part Number	Medeco <sup>3</sup>	BiLevel	Medeco X4	eCylinder
4 pin, 1 1/16" Removable core camlock	607155XT (P)				
	607155XT (S)				
4 pin, 7/8" Removable core camlock	607255XT (P)				
	607255XT (S)				
4 pin, 1 1/8" Removable core camlock	607355XT (P)				
	607355XT (S)				
5 pin, 1 1/8" Removable core camlock	607455XT (P)				
	607455XT (S)				
5 pin, 7/8" Removable core camlock	607555XT (P)				
	607555XT (S)				
Plug for Removable Core Cam Locks. Cam locks are provided with plug, but additional plugs may be ordered separately.	66391 (P)				
	66391 (S)				

Keys may be ordered separately.

## X = Rotation for Removable Core Cam Lock

Description	Part Number
90 degree Clockwise	0
90 degree Counter Clockwise	1
180 degree Clockwise	2
180 degree Counter Clockwise	3



## A Series Flat Cams

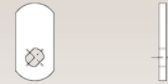
Description	Part Number	Price
5/8" Flat Cam	CT-A00	
3/4" Flat Cam	CT-A01	
7/8" Flat Cam	CT-A02	
1" Flat Cam	CT-A03	
1 1/8" Flat Cam	CT-A04	
1 1/4" Flat Cam	CT-A05	
1 3/8" Flat Cam	CT-A06	
1 1/2" Flat Cam	CT-A07	
1 5/8" Flat Cam	CT-A08	
1 3/4" Flat Cam	CT-A09	
2" Flat Cam	CT-A11	
2 1/8" Flat Cam	CT-A12	
2 1/4" Flat Cam	CT-A13	
2 3/8" Flat Cam	CT-A14	
2 1/2" Flat Cam	CT-A15	
2 5/8" Flat Cam	CT-A16	
3" Flat Cam	CT-A19	

For pricing of expired patent technologies (Original, Biaxial, KeyMark) please refer to the spreadsheet on the partner section of [www.medeco.com](http://www.medeco.com).

\*\*Refer to the eCylinder section for more detail on specific technologies available and pricing. Technologies are represented by the following letters:

T = Medeco<sup>3</sup>, S = M<sup>3</sup> CLIQ, J = Medeco<sup>3</sup> BiLevel, W = Biaxial, V = Medeco Biaxial CLIQ, K = Medeco KM, N = Medeco X4, C = Classic CLIQ, M = Medeco X4 CLIQ, ". " = Original, Z = Medeco Original KW CLIQ, G = Medeco XT \*\*\*See key section for surcharges for custom coined cut keys or special stamping requirements.

**Note:** (P) refers to **Pinned** and (S) to **Sub-Pinned** at the end of each part string in the price book.



### C Series Flat Cams, 45° Tenon

Description	Part Number	Price
7/8" Flat Cam	CT-C02	
1 1/8" Flat Cam	CT-C04	
1 1/4" Flat Cam	CT-C05	
1 5/8" Flat Cam	CT-C08	
1 3/4" Flat Cam	CT-C09	
2" Flat Cam	CT-C11	



### D Series Flat Cams, Horizontal Tenon

Description	Part Number	Price
5/8" Flat Cam	CT-D00	
3/4" Flat Cam	CT-D01	
7/8" Flat Cam	CT-D02	
1" Flat Cam	CT-D03	
1 1/8" Flat Cam	CT-D04	
1 1/4" Flat Cam	CT-D05	
1 3/8" Flat Cam	CT-D06	
1 1/2" Flat Cam	CT-D07	
1 5/8" Flat Cam	CT-D08	
1 3/4" Flat Cam	CT-D09	
2" Flat Cam	CT-D11	
2 1/8" Flat Cam	CT-D12	
2 1/2" Flat Cam	CT-D15	
3" Flat Cam	CT-D19	



### H Series Offset Cam, Vertical Tenon

Description	Part Number	Price
1 1/4" Cam with 1/8" offset	CT-H00	
1 1/8" Cam with 7/32" offset	CT-H07	
1 1/8" Cam with 1/8" offset	CT-H09	
1 1/2" Cam with 7/32" offset	CT-H14	
1 1/4" Cam with 7/32" offset	CT-H15	
1 1/8" Cam with 5/16" offset	CT-H16	
1 1/4" Cam with 5/16" offset	CT-H17	
1 3/4" Cam with 5/16" offset	CT-H19	
2" Cam with 5/16" offset	CT-H20	
7/8" Cam with 5/32" offset	CT-H27	
1 3/4" Cam with 7/32" offset	CT-H30	
1 1/2" Cam with 5/16" offset	CT-H32	

For pricing of expired patent technologies (Original, Biaxial, KeyMark) please refer to the spreadsheet on the partner section of [www.medeco.com](http://www.medeco.com).

\*\*Refer to the eCylinder section for more detail on specific technologies available and pricing. Technologies are represented by the following letters:

T = Medeco<sup>3</sup>, S = M<sup>3</sup> CLIQ, J = Medeco<sup>3</sup> BiLevel, W = Biaxial, V = Medeco Biaxial CLIQ, K = Medeco KM, N = Medeco X4, C = Classic CLIQ, M = Medeco X4 CLIQ, ". " = Original, Z = Medeco Original KW CLIQ, G = Medeco XT \*\*\*See key section for surcharges for custom coined cut keys or special stamping requirements.

**Note:** (P) refers to **Pinned** and (S) to **Sub-Pinned** at the end of each part string in the price book.





### J Series Offset Cam, Horizontal

Description	Part Number	Price
1 1/8" Cam with 7/32" offset	CT-J01	
1" Cam with 1/8" offset	CT-J05	
1 1/4" Cam with 1/8" offset	CT-J07	
1 5/8" Cam with 1/8" offset	CT-J08	
2 1/8" Cam with 1/8" offset	CT-J11	
1 1/4" Cam with 7/32" offset	CT-J12	
1 1/8" Cam with 5/16" offset	CT-J13	
1 1/4" Cam with 5/16" offset	CT-J14	
1 5/8" Cam with 5/16" offset	CT-J15	
2 1/8" Cam with 5/16" offset	CT-J18	
1 1/8" Cam with 5/32" offset	CT-J22	
1 1/2" Cam with 5/16" offset	CT-J27	
2 1/8" Cam with 7/32" offset	CT-J28	
7/8" Cam with 5/32" offset	CT-J29	

### 3/4" Removable Plug Lock

Description	Part Number	Medeco <sup>3</sup>	BiLevel	Medeco X4	eCylinder
1 keypull, 3/4" Removable plug lock	640250T (P)				
	640250T (S)				
2 keypull, 3/4" Removable plug lock	640251T (P)				
	640251T (S)				

### 1 1/8" Removable Plug Lock

Description	Part Number	Medeco <sup>3</sup>	BiLevel	Medeco X4	eCylinder
1 keypull, vertical flats, flush mount	640550T (P)				
	640550T (S)				
1 keypull, horizontal flats, flush mount	640550AT (P)				
	640550AT (S)				
2 keypull, vertical flats, surface mount with tapered bezel	640550FT (P)				
	640550FT (S)				

Keys are ordered separately.

For pricing of expired patent technologies (Original, Biaxial, KeyMark) please refer to the spreadsheet on the partner section of [www.medeco.com](http://www.medeco.com).

\*\*Refer to the eCylinder section for more detail on specific technologies available and pricing. Technologies are represented by the following letters:

T = Medeco<sup>3</sup>, S = M<sup>3</sup> CLIQ, J = Medeco<sup>3</sup> BiLevel, W = Biaxial, V = Medeco Biaxial CLIQ, K = Medeco KM, N = Medeco X4, C = Classic CLIQ, M = Medeco X4 CLIQ, ". " = Original, Z = Medeco Original KW CLIQ, G = Medeco XT \*\*\*See key section for surcharges for custom coined cut keys or special stamping requirements.

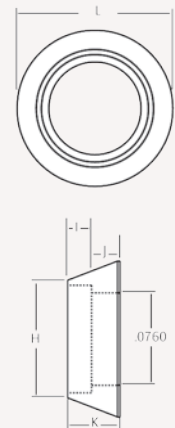
**Note:** (P) refers to **Pinned** and (S) to **Sub-Pinned** at the end of each part string in the price book.

### Security Collars

Description	Part Number	Price
Cam lock security collar	CP-070501	
Cam lock security collar	CP-070131	
Cam lock security collar	CP-070161	
Cam lock security collar	CP-070171	
Cam lock security collar	CP-070441	
Cam lock security collar	CP-070201	
Cam lock security collar	CP-070111	
Cam lock security collar	CP-070141	
Cam lock security collar	CP-070181	
Cam lock security collar	CP-070481	

### Security Collars

Part Number	(H)	(I)	(J)	(K)	(L)
CP-070501	1.000"	.142"	.170"	.312"	1.290"
CP-070131	.885"	.142"	.170"	.312"	1.210"
CP-070161	.885"	.188"	.250"	.438"	1.356"
CP-070171	.885"	.200"	.238"	.438"	1.290"
CP-070441	.885"	.260"	.070"	.330"	1.210"
CP-070201	.885"	.262"	.050"	.312"	1.210"
CP-070111	.885"	.278"	.160"	.438"	1.290"
CP-070141	.885"	.325"	.050"	.375"	1.275"
CP-070181	1.000"	.450"	.050"	.500"	1.250"
CP-070481	1.000"	.638"	.050"	.688"	1.313"

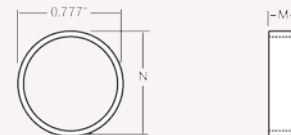


### Spacers

Description	Part Number	Price
Cam lock spacer, obtain specific part number from following dimension chart.	CP-160XXX	

### Spacers

Part Number	(M)	(N)
CP-160051	.125"	.875"
CP-160101	.140"	.875"
CP-160071	.188"	.875"
CP-160111	.200"	.875"
CP-160081	.250"	.875"
CP-160091	.275"	.875"
CP-160301	.375"	.875"
CP-160121	.400"	.875"
CP-160061	.530"	.875"
CP-160271	.437"	.875"
CP-160541	.031"	.875"
CP-160551	.062"	.875"
CP-160571	.312"	.875"
CP-160591	.062"	.995"
CP-160601	.125"	.995"
CP-160611	.250"	.995"



For pricing of expired patent technologies (Original, Biaxial, KeyMark) please refer to the spreadsheet on the partner section of [www.medeco.com](http://www.medeco.com).  
 \*\*Refer to the eCylinder section for more detail on specific technologies available and pricing. Technologies are represented by the following letters:  
 T = Medeco<sup>3</sup>, S = M<sup>3</sup> CLIQ, J = Medeco<sup>3</sup> BiLevel, W = Biaxial, V = Medeco Biaxial CLIQ, K = Medeco KM, N = Medeco X4, C = Classic CLIQ, M = Medeco X4 CLIQ,  
 “. ” = Original, Z = Medeco Original KW CLIQ, G = Medeco XT \*\*\*See key section for surcharges for custom coined cut keys or special stamping requirements.  
**Note: (P)** refers to **Pinned** and **(S)** to **Sub-Pinned** at the end of each part string in the price book.

## Pop-Out, T-Handle Cylinder

Description	Part Number	Medeco <sup>3</sup>	BiLevel	Medeco X4	eCylinder
5 pin, zinc deadbolt	640155CT (P)				
	640155CT (S)				
5 pin, zinc springbolt	640155T (P)				
	640155T (S)				
4 pin, zinc springbolt	640750ET (P)				
	640750ET (S)				
4 pin, zinc deadbolt	640750GT (P)				
	640750GT (S)				
4 pin, steel springbolt	640950T (P)				
	640950T (S)				
4 pin, steel deadbolt	640952T (P)				
	640952T (S)				
4 pin, steel springbolt, steel shell	641050T (P)				
	641050T (S)				
4 pin, steel deadbolt, steel shell	641051T (P)				
	641051T (S)				

\* Note Keyed pop out t-handle cylinders are supplied with two keys.

For pricing of expired patent technologies (Original, Biaxial, KeyMark) please refer to the spreadsheet on the partner section of [www.medeco.com](http://www.medeco.com).

\*\*Refer to the eCylinder section for more detail on specific technologies available and pricing. Technologies are represented by the following letters:

T = Medeco<sup>3</sup>, S = M<sup>3</sup> CLIQ, J = Medeco<sup>3</sup> BiLevel, W = Biaxial, V = Medeco Biaxial CLIQ, K = Medeco KM, N = Medeco X4, C = Classic CLIQ, M = Medeco X4 CLIQ, “.” = Original, Z = Medeco Original KW CLIQ, G = Medeco XT \*\*\*See key section for surcharges for custom coined cut keys or special stamping requirements.

**Note:** (P) refers to **Pinned** and (S) to **Sub-Pinned** at the end of each part string in the price book.